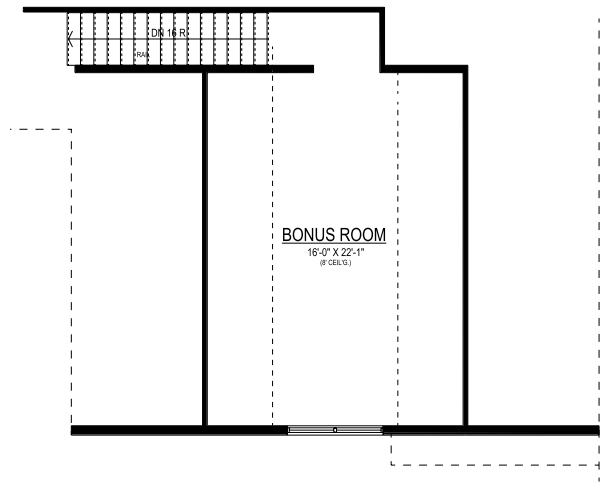
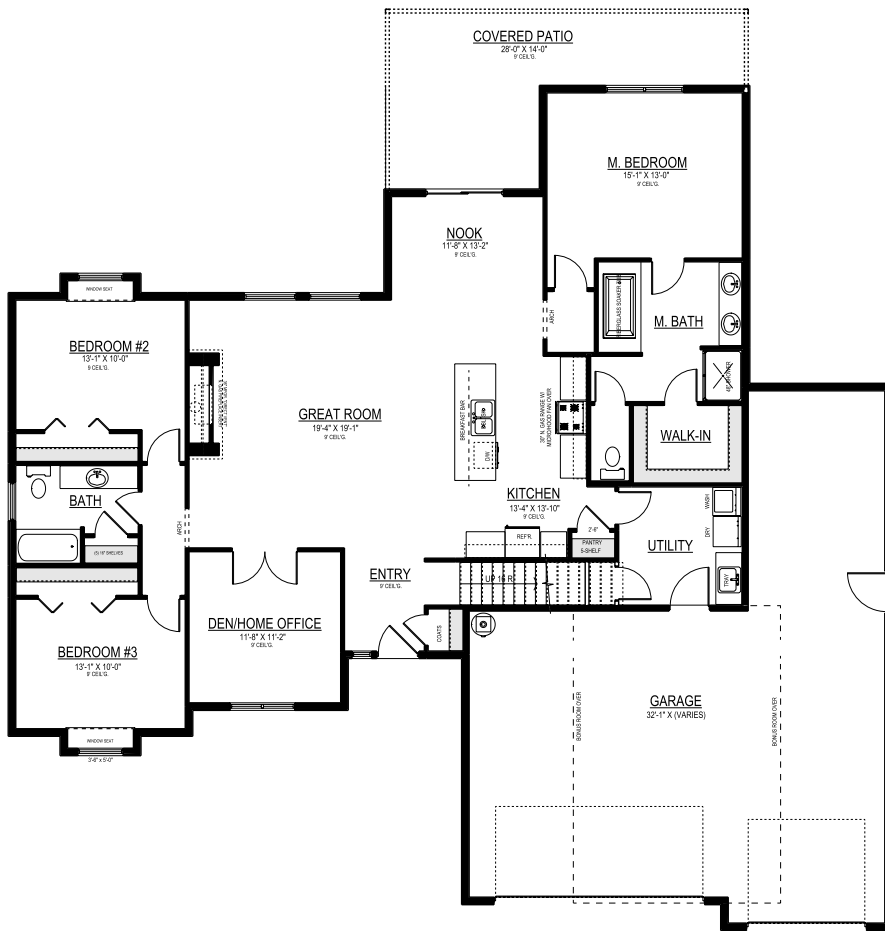




\*Similar to Photo



Upper Elevation

**TOTAL AREA:** 2,394 sq ft  
**BEDROOMS:** 3  
**BATHROOMS:** 2  
**GARAGE STALLS:** 4  
**WIDTH:** 68'  
**DEPTH:** 71'

Visit us anytime at [Sandhollowhomes.com](http://Sandhollowhomes.com) for a complete list of all of our floor plans and base prices.

- All prices subject to change.
- Lot price not included.
- Price subject to change based on location.
- Floor Plan may show upgrades not included in base price.
- Upgrade pricing available through a Sandhollow Homes representative.

## Construction Standards\*

### KITCHEN & DINING ROOM

Stainless Steel Undermount Sink	Included
Granite Countertops	Included
Full Height Backsplash	Included
Engineered Hardwood Flooring	Included

### APPLIANCES

GE Gas Range, OTR Micro, Dishwasher	Included
-------------------------------------	----------

### MASTER BATH

Stainless Steel or ORB Shower Door	Included
HD Laminate Countertops	Included
Fiberglass Shower	Included
Soaker Tub - Fiberglass (per plan)	Included
Tile Flooring	Included

### HALL BATH

HD Laminate Countertops	Included
Fiberglass Tub/Shower	Included
Tile Flooring	Included

### CABINETS

Natural Wood Cabinets	Included
-----------------------	----------

### LAUNDRY

Tile Flooring	Included
---------------	----------

### TRIM DETAILS

2 1/4" Trim with 4 1/4" Base	Included
Painted Interior Doors and Trim	Included
Wood Wrapped Windows In Main Living (Painted Trim)	Included
Painted Fireplace Mantle	Included

### INTERIOR

Hardwood and Tile Installed Under Cabinets	Included
9' Ceilings	Included
Bullnose Sheetrock Corners	Included
2 Tone Paint (Walls and Ceilings)	Included
Brushed Nickel Door Hardware	Included

### FIREPLACE

36" Center Gas Fireplace in Great Room	Included
Tile Fireplace Surround	Included
Fireplace Mantle - Painted	Included

### HVAC/GAS PIPING

1 Year HVAC Service Contract Construction Standards	Included
95% Gas Furnace w/ AC and Programmable Thermostat	Included
Gas BBQ Stub to Patio	Included

### ELECTRICAL WIRING

Rocker Switches (White)	Included
Deco Plugs (White)	Included
200 Amp Electrical Service	Included
Recessed Lighting - Per Plan	Included

### PLUMBING

High Efficiency 50 Gallon Heat Pump Water Heater	Included
Stainless Steel Fixtures	Included
Pre-Plumb for Water Softener	Included
Hose Bibs - 2 Included	Included

### EXTERIOR

Roof Color - Black or Weatherwood	Included
Lap Siding with Stone Accents	Included
Enclosed Soffits	Included
Deadbolts on Exterior Doors	Included
2x6 Exterior Walls - 16" on Center	Included
Covered Patio - Sized per plan	Included

### WINDOWS

No Grids	Included
White Vinyl Energy Star Windows	Included

### GARAGE

Keyless Entry Pad	Included
Garage Walls and Ceiling - Sheetrock and Firetape	Included
Garage Door Opener on Main Door	Included
Garage Man Door	Included
Traditional Panel Garage Door	Included
R-19 Insulation in Garage Walls	Included

### INSULATION

R-21 Insulated Walls	Included
Crawl space with R-30 Insulation	Included
R-49 Insulation in Attic	Included

### LANDSCAPING

Front Yard Landscaping - Std. City Lot (Sod and Planting Strips)	Included
--	----------

### FRONT DOOR

Fiberglass Entry Door - Paint Grade	
-------------------------------------	--

### OTHER

2-10 HBW Home Warranty	Included
------------------------	----------