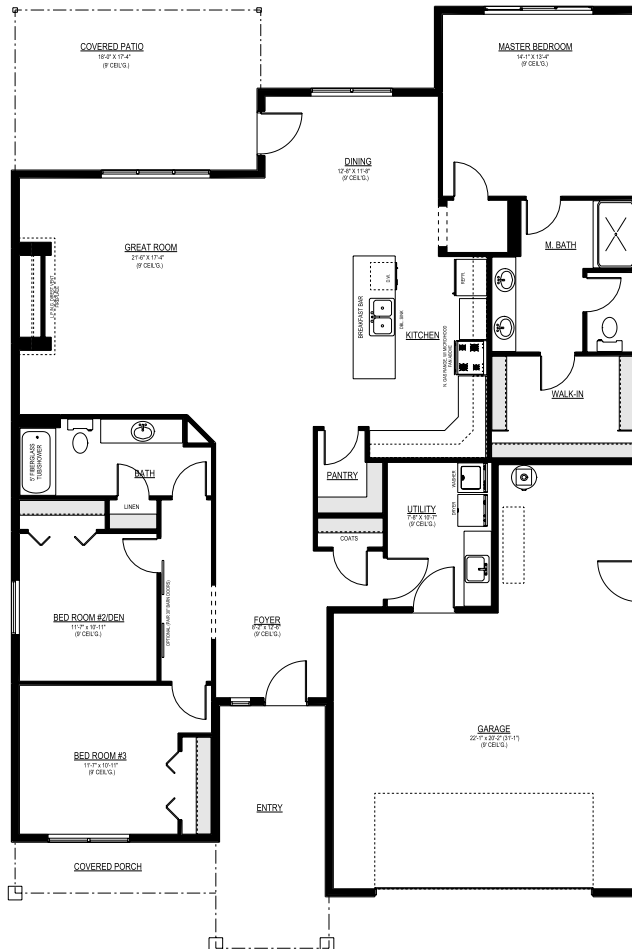




**\*Similar to Photo**



**TOTAL AREA:** 1,938 sq ft  
**BEDROOMS:** 3  
**BATHROOMS:** 2  
**GARAGE STALLS:** 3  
**WIDTH:** 46'  
**DEPTH:** 65'

Visit us anytime at [Sandhollowhomes.com](http://Sandhollowhomes.com) for a complete list of all of our floor plans and base prices.

- All prices subject to change.
- Lot price not included.
- Price subject to change based on location.
- Floor Plan may show upgrades not included in base price.
- Upgrade pricing available through a Sandhollow Homes representative.

## Construction Standards\*

### KITCHEN & DINING ROOM

|                                 |          |
|---------------------------------|----------|
| Stainless Steel Undermount Sink | Included |
| Granite Countertops             | Included |
| Full Height Backsplash          | Included |
| Engineered Hardwood Flooring    | Included |

### APPLIANCES

|                                     |          |
|-------------------------------------|----------|
| GE Gas Range, OTR Micro, Dishwasher | Included |
|-------------------------------------|----------|

### MASTER BATH

|                                    |          |
|------------------------------------|----------|
| Stainless Steel or ORB Shower Door | Included |
| HD Laminate Countertops            | Included |
| Fiberglass Shower                  | Included |
| Soaker Tub - Fiberglass (per plan) | Included |
| Tile Flooring                      | Included |

### HALL BATH

|                         |          |
|-------------------------|----------|
| HD Laminate Countertops | Included |
| Fiberglass Tub/Shower   | Included |
| Tile Flooring           | Included |

### CABINETS

|                       |          |
|-----------------------|----------|
| Natural Wood Cabinets | Included |
|-----------------------|----------|

### LAUNDRY

|               |          |
|---------------|----------|
| Tile Flooring | Included |
|---------------|----------|

### TRIM DETAILS

|  |          |
|--|----------|
| 2 1/4" Trim with 4 1/4" Base                       | Included |
| Painted Interior Doors and Trim                    | Included |
| Wood Wrapped Windows In Main Living (Painted Trim) | Included |
| Painted Fireplace Mantle                           | Included |

### INTERIOR

|  |          |
|--|----------|
| Hardwood and Tile Installed Under Cabinets | Included |
| 9' Ceilings                                | Included |
| Bullnose Sheetrock Corners                 | Included |
| 2 Tone Paint (Walls and Ceilings)          | Included |
| Brushed Nickel Door Hardware               | Included |

### FIREPLACE

|  |          |
|--|----------|
| 36" Center Gas Fireplace in Great Room | Included |
| Tile Fireplace Surround                | Included |
| Fireplace Mantle - Painted             | Included |

### HVAC/GAS PIPING

|   |          |
|---|----------|
| 1 Year HVAC Service Contract                      | Included |
| Construction Standards                            |          |
| 95% Gas Furnace w/ AC and Programmable Thermostat | Included |
| Gas BBQ Stub to Patio                             | Included |

### ELECTRICAL WIRING

|                              |          |
|------------------------------|----------|
| Rocker Switches (White)      | Included |
| Deco Plugs (White)           | Included |
| 200 Amp Electrical Service   | Included |
| Recessed Lighting - Per Plan | Included |

### PLUMBING

|  |          |
|--|----------|
| High Efficiency 50 Gallon Heat Pump Water Heater | Included |
| Stainless Steel Fixtures                         | Included |
| Pre-Plumb for Water Softener                     | Included |
| Hose Bibs - 2 Included                           | Included |

### EXTERIOR

|                                    |          |
|------------------------------------|----------|
| Roof Color - Black or Weatherwood  | Included |
| Lap Siding with Stone Accents      | Included |
| Enclosed Soffits                   | Included |
| Deadbolts on Exterior Doors        | Included |
| 2x6 Exterior Walls - 16" on Center | Included |
| Covered Patio - Sized per plan     | Included |

### WINDOWS

|                                 |          |
|---------------------------------|----------|
| No Grids                        | Included |
| White Vinyl Energy Star Windows | Included |

### GARAGE

|   |          |
|---|----------|
| Keyless Entry Pad                                 | Included |
| Garage Walls and Ceiling - Sheetrock and Firetape | Included |
| Garage Door Opener on Main Door                   | Included |
| Garage Man Door                                   | Included |
| Traditional Panel Garage Door                     | Included |
| R-19 Insulation in Garage Walls                   | Included |

### INSULATION

|                                  |          |
|----------------------------------|----------|
| R-21 Insulated Walls             | Included |
| Crawl space with R-30 Insulation | Included |
| R-49 Insulation in Attic         | Included |

### LANDSCAPING

|  |          |
|--|----------|
| Front Yard Landscaping - Std. City Lot (Sod and Planting Strips) | Included |
|--|----------|

### FRONT DOOR

|                                     |  |
|-------------------------------------|--|
| Fiberglass Entry Door - Paint Grade |  |
|-------------------------------------|--|

### OTHER

|                        |          |
|------------------------|----------|
| 2-10 HBW Home Warranty | Included |
|------------------------|----------|