



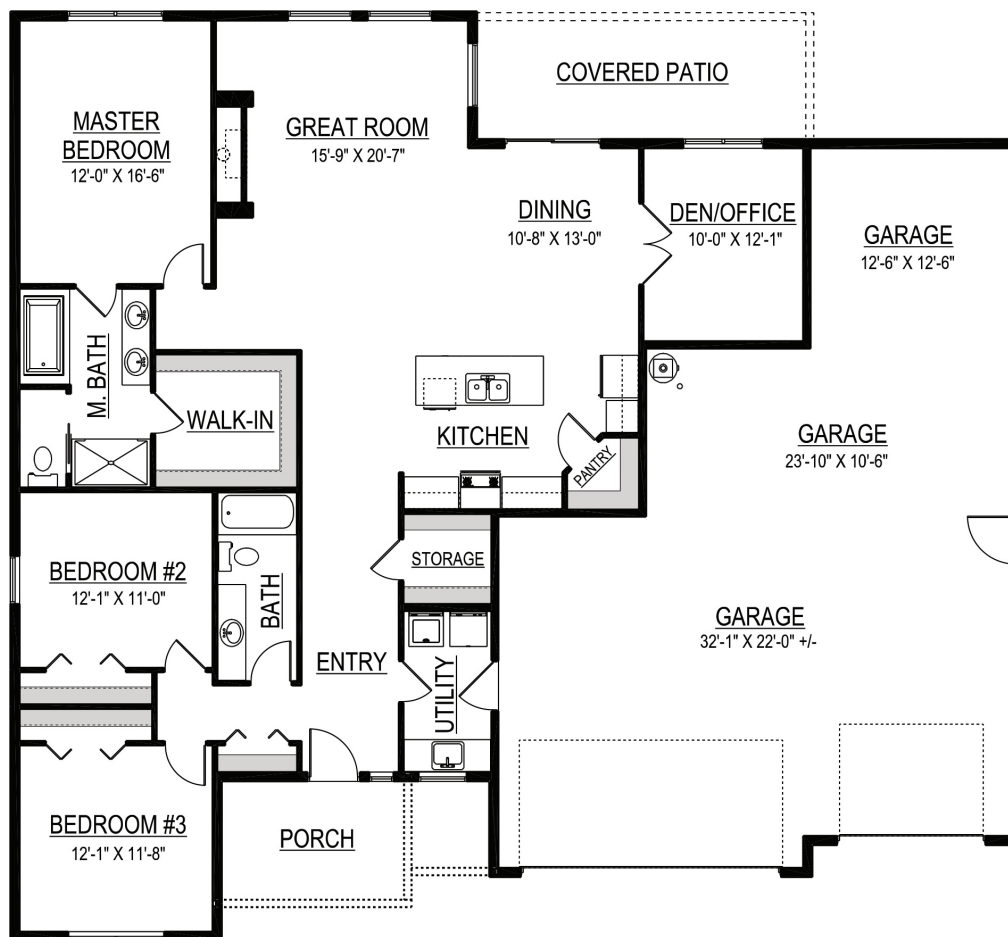
SANDHOLLOW
HOMES, LLC

www.SandhollowHomes.com

THE WILLOW 5 CAR



*Similar to Photo



TOTAL AREA: 1,931 sq ft
BEDROOMS: 3
BATHROOMS: 2
GARAGE STALLS: 5
WIDTH: 63'
DEPTH: 58'

Visit us anytime at Sandhollowhomes.com for a complete list of all of our floor plans and base prices.

- All prices subject to change.
- Lot price not included.
- Price subject to change based on location.
- Floor Plan may show upgrades not included in base price.
- Upgrade pricing available through a Sandhollow Homes representative.



SANDHOLLOW
HOMES, LLC

www.SandhollowHomes.com

THE WILLOW 5 CAR

Construction Standards*

KITCHEN & DINING ROOM

Stainless Steel Undermount Sink	Included
Granite Countertops	Included
Full Height Backsplash	Included
Laminate Flooring	Included

APPLIANCES

GE Gas Range, OTR Micro, Dishwasher	Included
-------------------------------------	----------

MASTER BATH

HD Laminate Countertops	Included
Fiberglass Shower	Included
Tile Flooring	Included

HALL BATH

HD Laminate Countertops	Included
Fiberglass Tub/Shower	Included
Tile Flooring	Included

CABINETS

Natural Wood Cabinets	Included
-----------------------	----------

LAUNDRY

Tile Flooring	Included
---------------	----------

INTERIOR

9' Ceilings	Included
Bullnose Sheetrock Corners	Included
2 1/4" Trim with 4 1/4" Base	Included
Painted Interior Doors and Trim	Included
2 Tone Paint (Walls and Ceilings)	Included
Brushed Nickel Door Hardware	Included

HVAC/GAS PIPING

1 Year HVAC Service Contract	Included
High Efficiency Heat Pump w/AC and Programmable Thermostat	Included

ELECTRICAL WIRING

Rocker Switches (White)	Included
Deco Plugs (White)	Included
200 Amp Electrical Service	Included
Recessed Lighting - Per Plan	Included

PLUMBING

High Efficiency 50 Gallon Heat Pump Water Heater	Included
Stainless Steel Fixtures	Included
Pre-Plumb for Water Softener	Included
Hose Bibs - 2 Included	Included

EXTERIOR

Roof Color - Black or Weatherwood	Included
Lap Siding with Stone Accents	Included
Enclosed Soffits	Included
Deadbolts on Exterior Doors	Included
2x6 Exterior Walls - 16" on Center	Included
Covered Patio - Sized per plan	Included

WINDOWS

No Grids	Included
White Vinyl Energy Star Windows	Included

GARAGE

Keyless Entry Pad	Included
Garage Walls and Ceiling - Sheetrock and Firetape	Included
Garage Door Opener on Main Door	Included
Traditional Panel Garage Door	Included
R-19 Insulation in Garage Walls	Included

INSULATION

R-21 Insulated Walls	Included
Crawl space with R-30 Insulation	Included
R-49 Insulation in Attic	Included

LANDSCAPING

Front Yard Landscaping - Std. City Lot (Sod and Planting Strips)	Included
--	----------

FRONT DOOR

Fiberglass Entry Door - Paint Grade	Included
-------------------------------------	----------

OTHER

2-10 HBW Home Warranty	Included
------------------------	----------

*Construction standards subject to change at any time without notice.